



English version



**EXPOM**

[www.expom.com](http://www.expom.com)



▲ WHO WE ARE

# WELCOME TO EXPOM S.A.

Ladies and Gentlemen, my name is Rafał Domżański and I am the President of the Management Board and CEO of Expom S.A. It is a great pleasure to present to you the specifics of our company's activity.

Expom is a company with over 70 years of experience, for which several hundred people work, including about 20 engineers. The company has its own technological and construction office, which handles half a thousand projects a year, as well as fourteen production halls with a total area of 22,000 sq. meters with a machine park. The company specializes in welding steel structures, machining, anti-corrosion and assembly of hydraulic, electric and pneumatic components.

Together with highly qualified technical, engineering and management personnel, I encourage you to familiarize with the offer of Expom S.A. in detail.

Rafał Domżański  
President of the Management Board / CEO



▲ WHO WE ARE

## ABOUT US

Over 300 qualified employees with approximately 20 engineers

14 production halls with total area over 22000 sq. meters along with the machinery

Lifting capacity up to 125 tons:

- ▲ 60 Tons lifting capacity in house
- ▲ 3 mobile cranes with biggest lifting up to 125 Tons

One of the biggest Machining Centre in Poland: Juaristi MP5 RAM machining space 17000 mm x 5000 mm x 2000 mm

Internal Laboratory and Quality Control



# WE LOOK AS HIGH AS POSSIBLE

THE ENTIRE PRODUCTION PROCESS IS SUPERVISED  
BY THE PERSONNEL DEALING  
WITH THE INTEGRATED  
MANAGEMENT SYSTEM.

In order to meet the strict requirements of customers, the welded structures produced at Expom S.A. are subjected to detailed tests at every stage of the production process. Tests are performed by highly qualified, certified personnel, in accordance with international standards such as ISO, ASME or AWS. The structures we manufacture are subject to the supervision of international classification societies such as: DNV, BV, ABS, LLOYDS, PRS or UDT.

▲ QUALITY STANDARDS

## CERTIFICATES

We work in accordance with the highest quality standards.

**ISO 9001 STANDARD SINCE 1991**

**COMPANY IS HAVING CERTIFICATION OF  
ISO 9001: 2015,  
ISO 14001: 2015,  
ISO 45001:2018,  
ISO 17025:2018**

## WE PRODUCE ACCORDING TO INTERNATIONAL RULES

- PN-EN 1090-2 EXC2, EXC3
- PN-EN ISO 15085-2 CL1
- PN-EN ISO 3834-2
- PN-EN ISO 15614-1
- PN-EN ISO 9712
- ASME IX
- AWS D1.1
- DNV-GL OS-C401
- DNV-GL CP - 0352 professional certificate
- NORSOK M 101
- FROSIO III
- IBDiM CL1

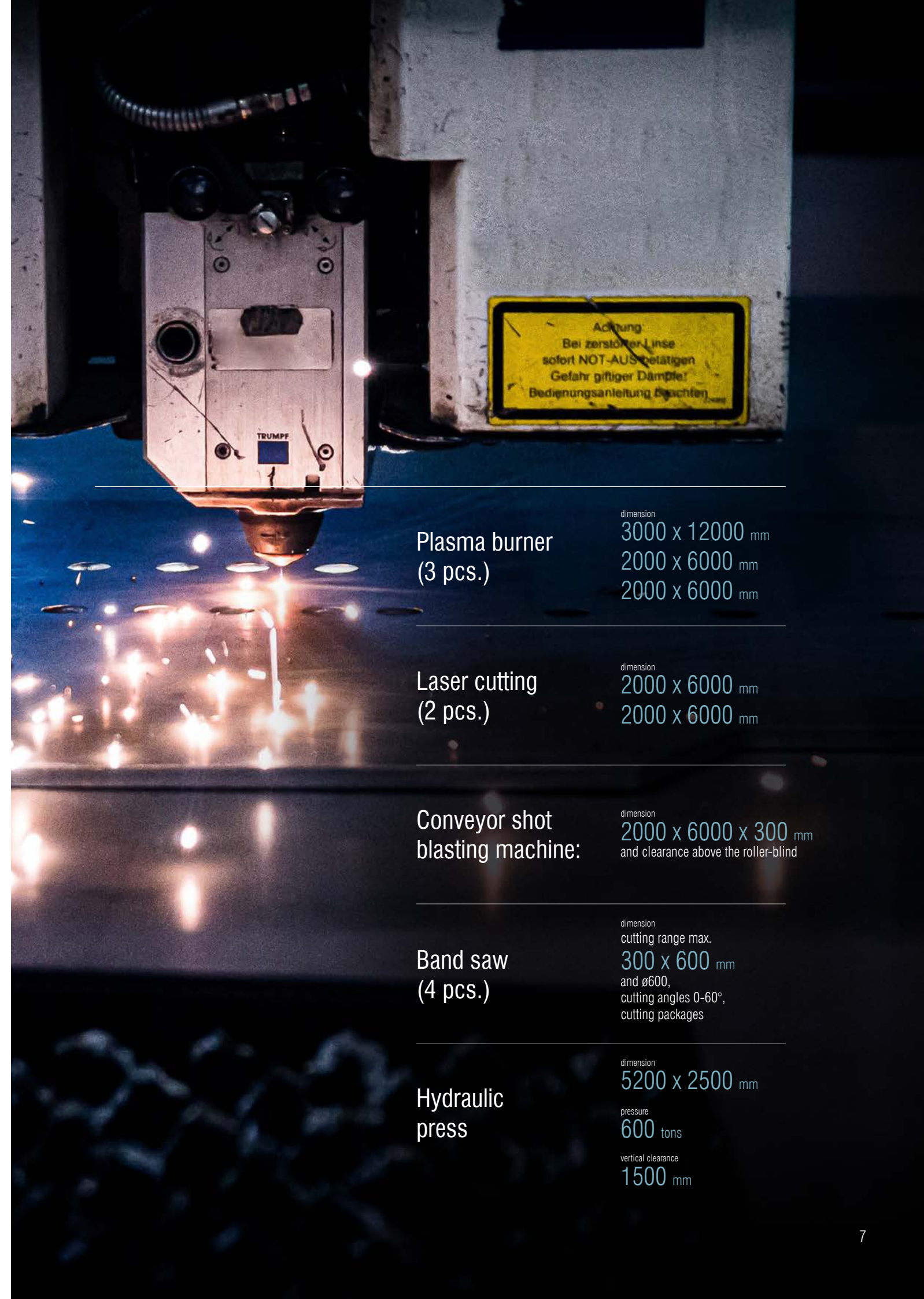




# MATERIAL PREPARATION

Professional process of preparing the material for production

**TOTAL AREA ABOUT 1250 M<sup>2</sup>**



Plasma burner  
(3 pcs.)

dimension  
3000 x 12000 mm  
2000 x 6000 mm  
2000 x 6000 mm

Laser cutting  
(2 pcs.)

dimension  
2000 x 6000 mm  
2000 x 6000 mm

Conveyor shot  
blasting machine:

dimension  
2000 x 6000 x 300 mm  
and clearance above the roller-blind

Band saw  
(4 pcs.)

dimension  
cutting range max.  
300 x 600 mm  
and ø600,  
cutting angles 0-60°,  
cutting packages

Hydraulic  
press

dimension  
5200 x 2500 mm  
pressure  
600 tons  
vertical clearance  
1500 mm



▲ PREPARING THE MATERIAL FOR PRODUCTION

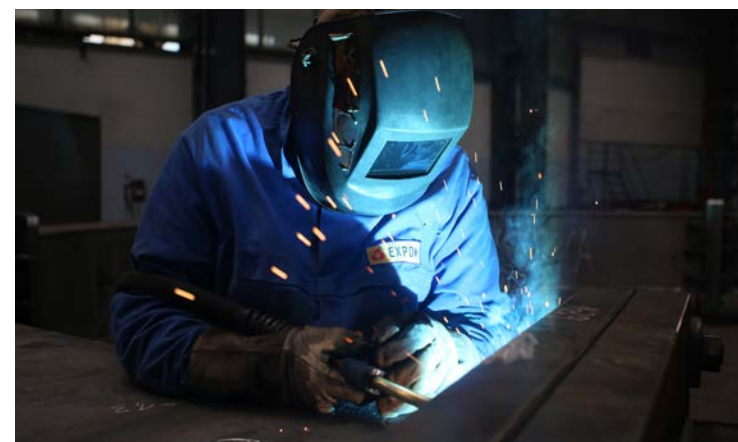
# WELDING

8 WELDING HALLS

MORE THAN  
20 WELDING  
WORKSTATIONS

Welding at Expom S.A. is carried out using the following methods:

- MAG 135
- MAG 138
- TIG 141
- FCAW 136
- MIG 131



## WE HAVE 50 CERTIFIED WELDERS

who are certified in the following welding technologies

- PN-EN ISO 15614 – 50 permissions
- ASME IX – 11 permissions
- AWS D1.1 – 23 permissions
- We offer welding of materials in thicknesses from 3mm upwards, material groups according to PN CR-ISO 15608 1, 3, 8, 10, 22.
- Typical carbon structural steels welded in Expom S235JR, S355J2+N, S460N, S690QL
- Non-standard steels welded in Expom: duplex (1.4462), AISI 304 (1.4301), AISI 316L (1.4404), hardox



## ROBOTIZED WELDING STATION

- Welding robot FANUCM710iC/12L
- 18000 mm robot track
- Rotary manipulators with a lifting capacity of 10t and a span of 10m



WHO WE ARE

# PRODUCTION AREA

**EXPOM S.A.**

(total production area of 9 halls)



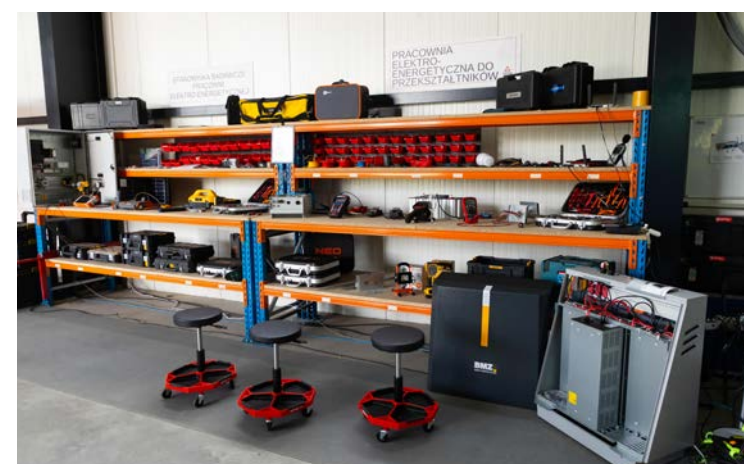
**KONTER SP. Z O.O.**

(5 halls including 3 new workshops with total area of 3500 m<sup>2</sup>)



**EXPOM ECO-ENERGY**

(Renewable Energy sector)





MACHINING

JUARISTI MP5RAM

machining space X x Y x Z x W x V  
17000 x 5000 x 1200 x 1000 x 2000 mm



SKODA WD 160 G

machining space X x Y x Z x W  
12000 x 3000 x 1600 x 150 mm

table load capacity  
10 tons

spindle diameter  
160 mm



JUARISTI MP5RAM

Machining center CNC

table load capacity  
60 tons

machining space X x Y x Z x W x V  
17000 x 5000 x 1200 x 1000 x 2000 mm

SKODA HCW2

Machining center CNC

table load capacity  
60 tons

machining space X x Y x Z x V  
12500 x 5000 x 2300 x 2000 mm

SKODA WD 160 G

Table type boring machine

table load capacity  
10 tons

spindle diameter  
160 mm

machining space X x Y x Z x W  
12000 x 3000 x 1600 x 150 mm

TOS WHQ 15CNC

Machining center CNC

table load capacity  
18 tons

machining space X x Y x Z x W  
6000 x 3000 x 1600 x 880 mm

TOS WHN 13.8 CNC

Table type boring machine CNC

table load capacity  
12 tons

machining space X x Y x Z  
3500 x 2500 x 1250 mm

TOS WHN 13 CNC

Table type boring machine CNC

table load capacity  
12 tons

machining space X x Y x Z  
3500 x 2500 x 1250 mm

WOTAN RAPID 5 R/63

Table type boring machine CNC

table load capacity  
60 tons

spindle diameter  
160 mm

machining space X x Y x Z  
4000 x 3000 x 2880 mm

WOTAN RAPID 2 R/6

Table type boring machine CNC

table load capacity  
8 tons

spindle diameter  
130 mm

machining space X x Y x Z  
3000 x 2500 x 2400 mm

JUARISTI 130 cm

Plate Boring Machine

table load capacity  
20 tons

spindle diameter  
130 mm

machining space X x Y x Z  
8000 x 2600 x 1500 mm

FRORIEP 16 KZ 300

Carousel lathe CNC

table load capacity  
25 tons

machining space X x Y  
3400 x 2400 mm

DEFUM ADS 115

Manual control

machining space X x Y x Z  
1800 x 1500 x 1200 mm

HAAS EC 1600

Machining center CNC

table load capacity  
5 tons

machining space X x Y x Z  
1630 x 1270 x 820 mm

LATHES

TUR 50, SNA 410, SPA 82000

maximum diameter  
800 mm

maximum length  
2000 mm

KAJAMA TG 60

Line boring machine

boring holes  
65-600 mm

milling Surface  
80-350 mm



## TOS WHQ 15CNC

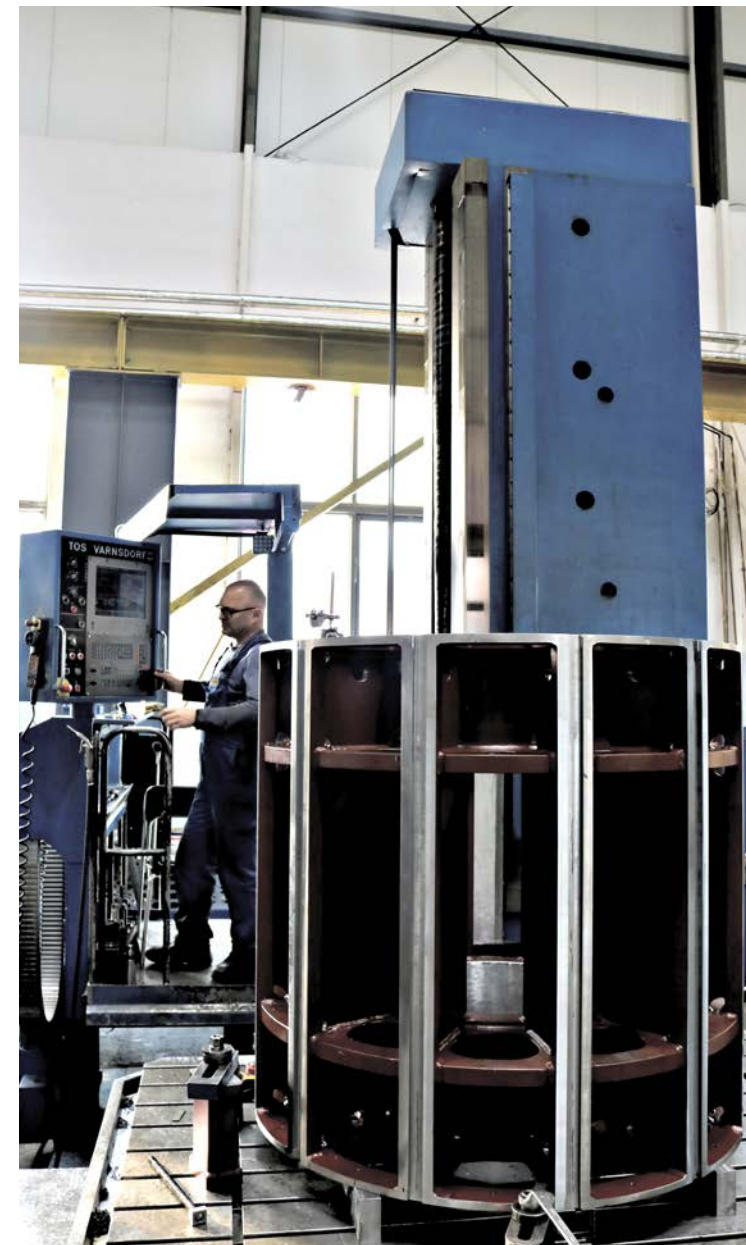
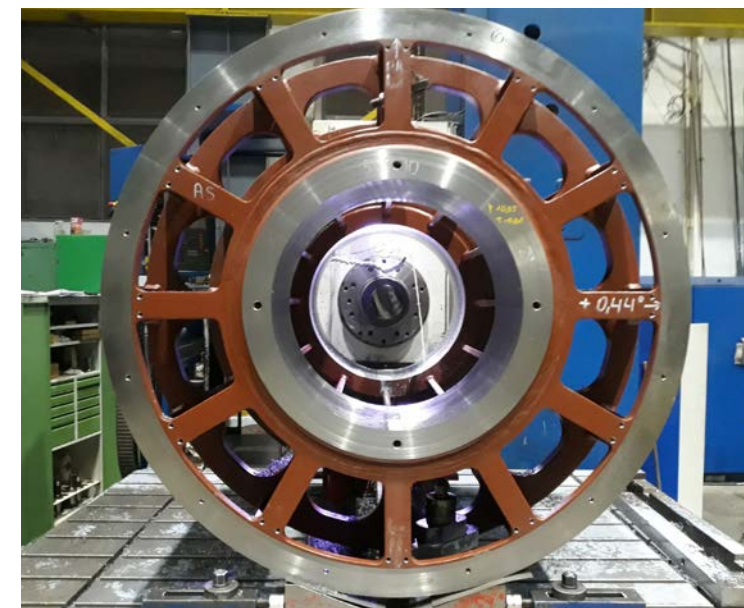


machining space X x Y x Z x W  
6000 x 3000 x 1600 x 880 mm  
table load capacity  
18 t

## SKODA HCW2



machining space X x Y x Z x V  
12500 x 5000 x 2300 x 2000 mm  
table load capacity  
60 t



## LINE BORING MACHINE KAJAMA TG 60



boring holes  
65-600 mm

milling surface  
80-350 mm

## FRORIEP 16 KZ 300 CAROUSEL LATHE



machining space X x Y  
3400 x 2400 mm  
table load capacity  
25 t

## HAAS EC 1600 MACHINING CENTER



machining space X x Y x Z  
1630 x 1270 x 820 mm  
table load capacity  
5 t





# PAINTING

We provide a full range of inspection services. From basic, such as the selection of painting systems, through the supervision of all stages of painting, to the final stage, such as pull-off tests, adhesion tests with full documentation.

## CERTIFICATES

Our technical staff is proud of having the following certificates:

- FROSIO level III ( 2 Inspectors)
- IBDiM

## 2 SHOT BLASTING CHAMBERS

(15 x 5 x 4 m and 14 x 6 x 5 m)

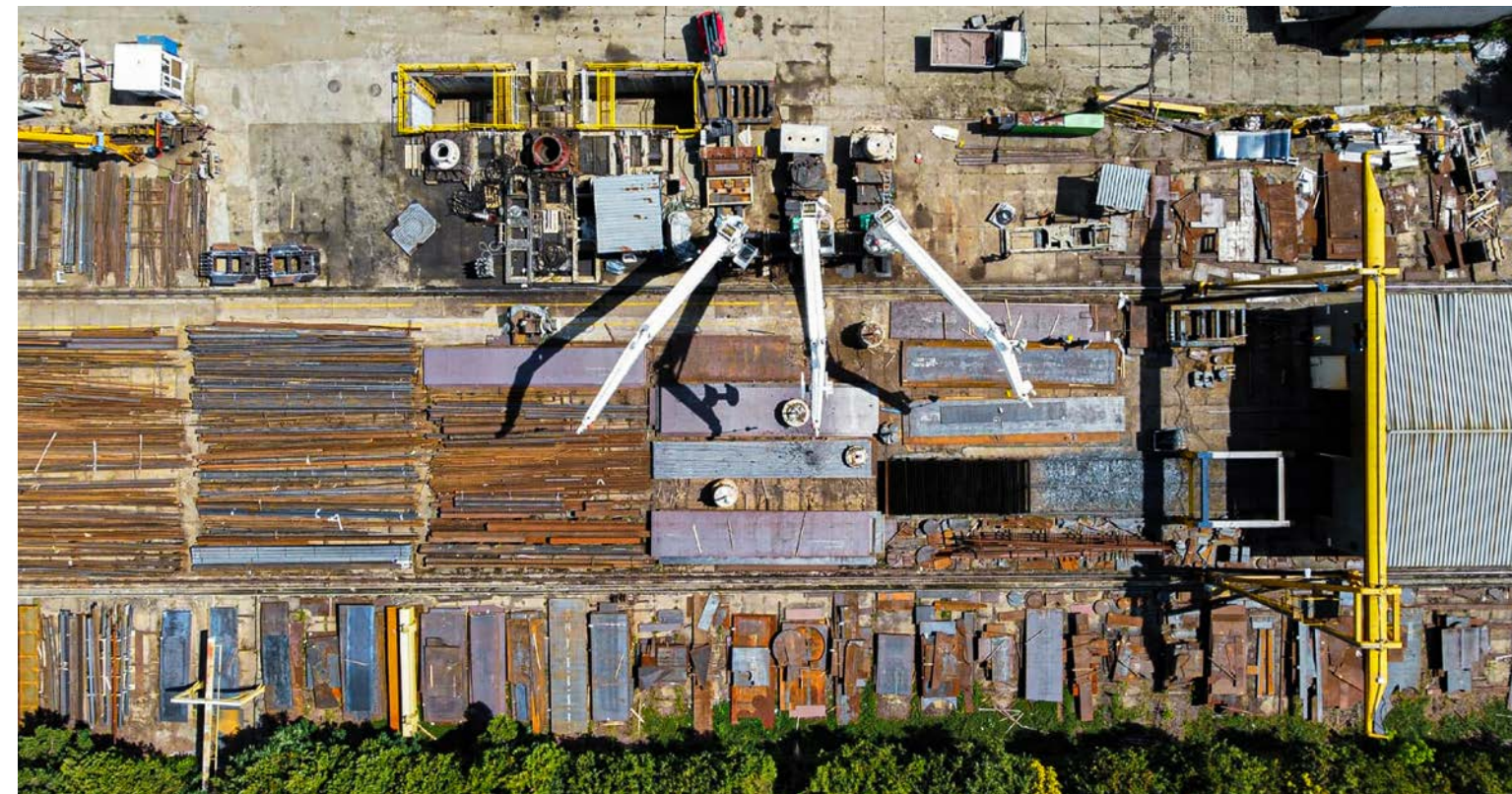
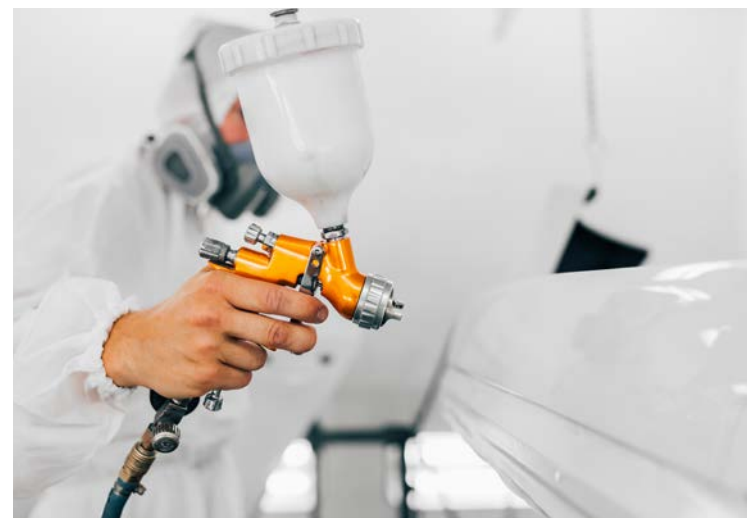
## TESTS

- Surface thickness measurements
- Surface preparation assessment
- Salt tests
- Tensile tests using method:
- Net cross cut tests
- Pull off tests
- Blotter test
- Blasting quality assessment in accordance with ISO 8501 -1: 2008
- Surface preparation assessment in accordance with ISO 8503 - 1: 2012
- Surface cleanliness examination using dust test method

## DRYING CHAMBER

(18 x 5 x 5 m) works in 65 °C

## METALLIZATION AND GALVANIZATION PROCESS

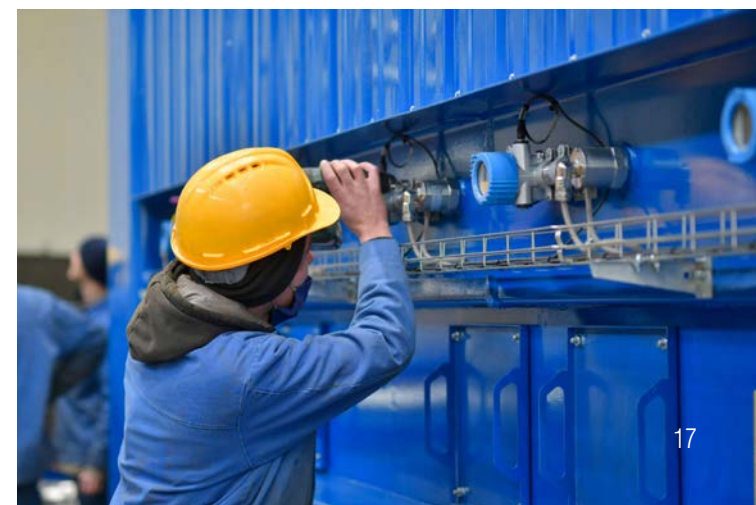
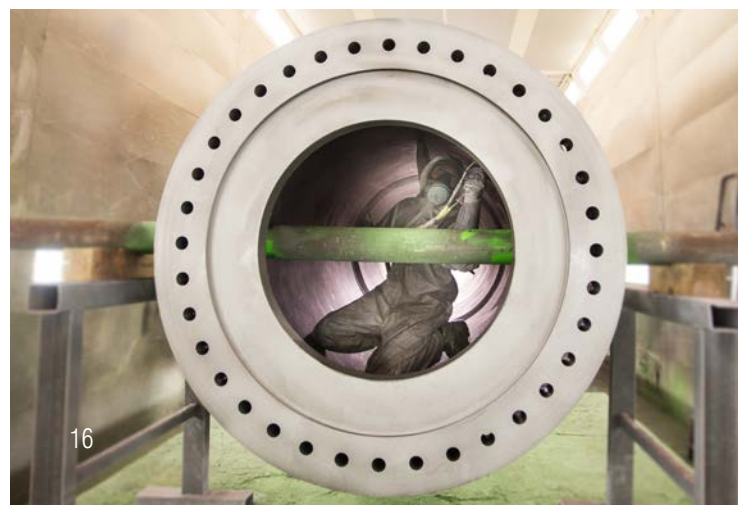
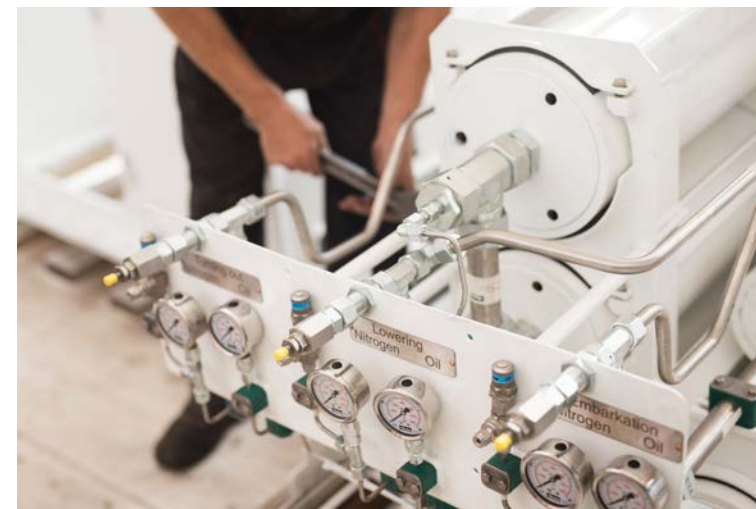


# OUTFITTING AND TESTS

We have many years of experience in turnkey projects, i.e. in the form of design, build, equip, install.

- Hydraulic outfitting (own hose crimping Parker system)
- Mechanical outfitting
- Electrical outfitting
- Pneumatic outfitting

We provide complete hydraulic piping systems as well as systems with flexible hoses.





# EXPOM PRODUCED

- More than 200 outfitted cranes – including 70 knuckle boom cranes (full mechanical, electrical and hydraulic outfitting)
- More than 1300 fully outfitted davits including 50% davits with weight more than 15 tones
- Expom have 5 stands for testing purpose



# PRODUCTION AND ASSEMBLY FOR TECHNOLOGICAL LINES

EXPOM is a leading industry expert in the manufacture and installation of steel structures for technological lines. Based on our extensive experience and in-depth knowledge, we offer a full range of services that cover everything from the design and manufacture to the assembly on site.

Our team is made up of highly skilled and qualified professionals who are committed to delivering each project to the highest standards. We pride ourselves on our ability to handle complex projects, regardless of size or complexity, with precision and efficiency.

We work with a wide range of industries, delivering bespoke solutions tailored to each client's specific needs and specifications. Whether you're looking for a one-off installation or ongoing maintenance and support, we're equipped to provide the comprehensive services you need.

We adhere to strict safety standards and ensure that all manufacturing and installation procedures are carried out responsibly. We are also committed to continuous learning and improvement, constantly updating our methods and technologies to stay at the forefront of industry developments.

At EXPOM, we're not just suppliers, we're partners. We work closely with our clients throughout the process, ensuring transparency, clear communication and satisfaction at every stage.

Choose EXPOM for reliable, high-quality production and assembly of steel structures for your technological lines. Let us be your trusted partner in delivering successful and efficient projects.





# QUALITY CONTROL AND LABORATORY

In order to meet the growing market requirements, in 2018 the Expom Laboratory was established, providing a number of specialized industrial tests. Inspectors of Expom S.A. have 3rd degree qualifications in accordance with PN-EN ISO 9712. In 2023, the laboratory was certified by an independent body according to ISO 17025:2018. The scope of certification includes non-destructive and destructive testing of metal materials and welded joints.

## NON-DESTRUCTIVE TESTING (NDT) OF WELDED JOINTS:

- Visual VT
- Magnetic-Powder MT
- Penetrative PT
- Ultrasonic UT
- Video surveys with an endoscope

## DESTRUCTIVE TESTS (DT) OF METAL CONSTRUCTION MATERIALS:

- Hardness test
- Material strength testing

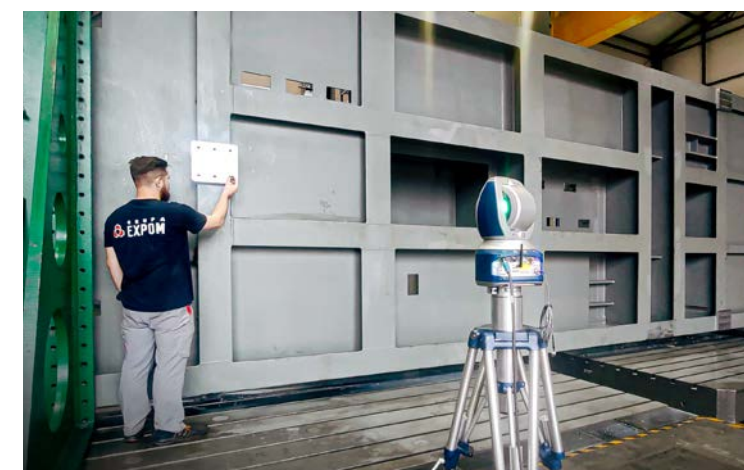
## ENDURANCE TESTING MACHINE:

- Maximum load: 600 kN, Measurement accuracy: 0,5%, Defined measurement methods in accordance with international standards (EN ISO, ASTM, DIN),



## GEOMETRY TESTS:

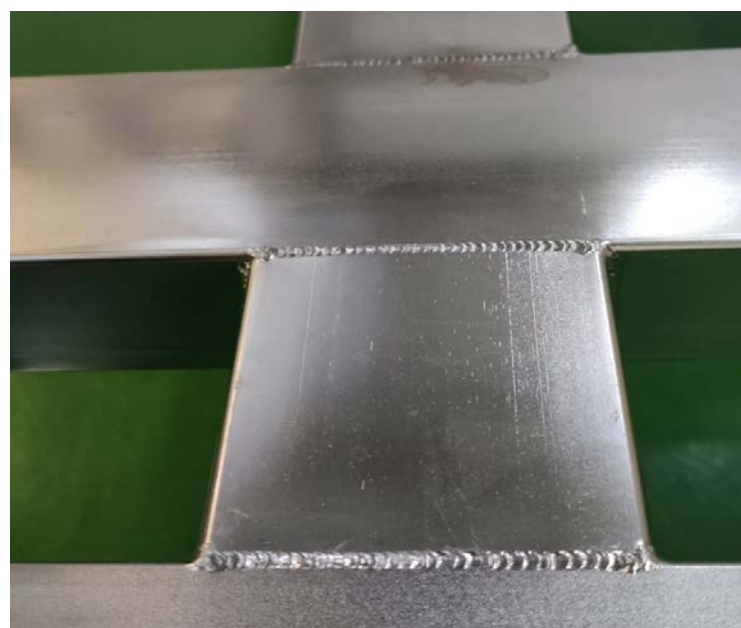
- Test with the Faro Arm (2 pcs.) and Faro Laser Tracker
- Manual measurements
- Measurements made on a tracer-measurement plate [15m x 6m]



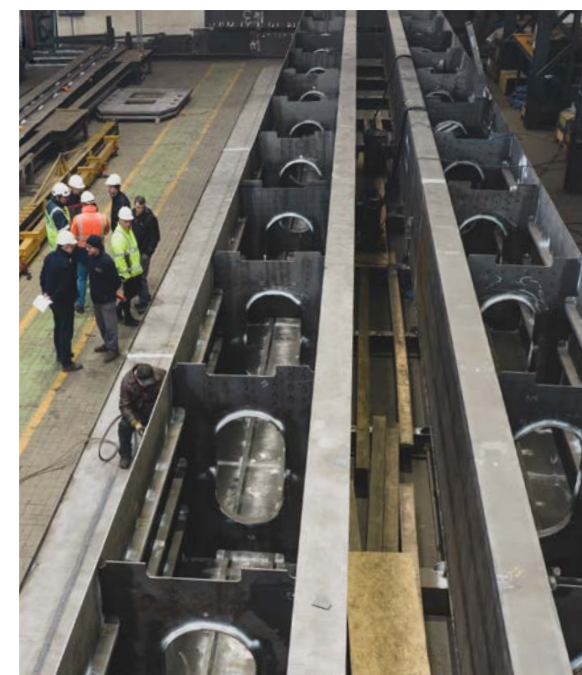


# STEEL STRUCTURES MADE OF STAINLESS STEEL AND ALUMINIUM

We offer execution of steel structures made of stainless steel and aluminium along pickling and passivation. We deal with comprehensive execution of steel elements – from the production of semi-finished products to the assembly of entire structures.



# MANUFACTURING DIVERSITY







# WE DELIVER TO EVERY PLACE IN THE WORLD

+48 56 474 22 51  
expom@expom.pl  
www.expom.com

Sienkiewicza 19  
13-306 Kurzętnik  
Poland



Distance:

Gdańsk (178 km), Warsaw (190 km), Berlin (540 km), Paris (1600 km), Vienna (800 km), Oslo (1500 km), Helsinki (1080 km), Stockholm (1500 km), London (1600 km), Dublin (2200 km)